

LANDSCAPE ARCHITECTURE.

LAND PLANNING.

IRRIGATION DESIGN.



evergreen
DESIGN GROUP

Statement of Qualifications

November 15, 2024

www.evergreendesigngroup.com

INTRODUCTION



Our History

Evergreen Design Group (EDG) has been a trusted partner in landscape architecture since its founding in 2005 by Rodney McNabb. What began as a passion for design evolved into a leading, veteran-owned firm with a national presence and deep local expertise. We've grown into a team of approximately 15 skilled landscape architects, designers, and irrigation specialists dedicated to creating sustainable, functional, and aesthetically harmonious spaces across the U.S.

Clients Come First

As a client-centered landscape architecture firm, we believe in listening to what our clients want. It's not about accolades or winning awards for ourselves; it's about delivering plans on time and remaining true to our client's vision and design intent. You have the reigns; we are here to guide you and help you move forward in the right direction.

We take great pride in providing a high level of personalized customer service, uncommon elsewhere. We have a unique business structure that allows us to connect with clients, daily, in four different time zones across the U.S. Technology makes it possible, regardless of location, to utilize our best talent and to collaborate with clients and consultants in a cost effective way.

Single Source

At EDG, we serve as your single source for all landscape architecture needs—eliminating the hassle of coordinating multiple service providers.

With EDG, you benefit from:

- Established understanding of your standards, enabling fast project startup.
- The flexibility to meet demanding schedules due to our team's size and agility.
- In-depth knowledge of local codes and regulations across diverse jurisdictions.

WHO WE ARE



EXPERIENCED.

NEARBY.

RESPONSIVE.

COST-CONSCIENCE.

OUR PHILOSOPHY

At Evergreen Design Group, we believe that great design transcends trends.

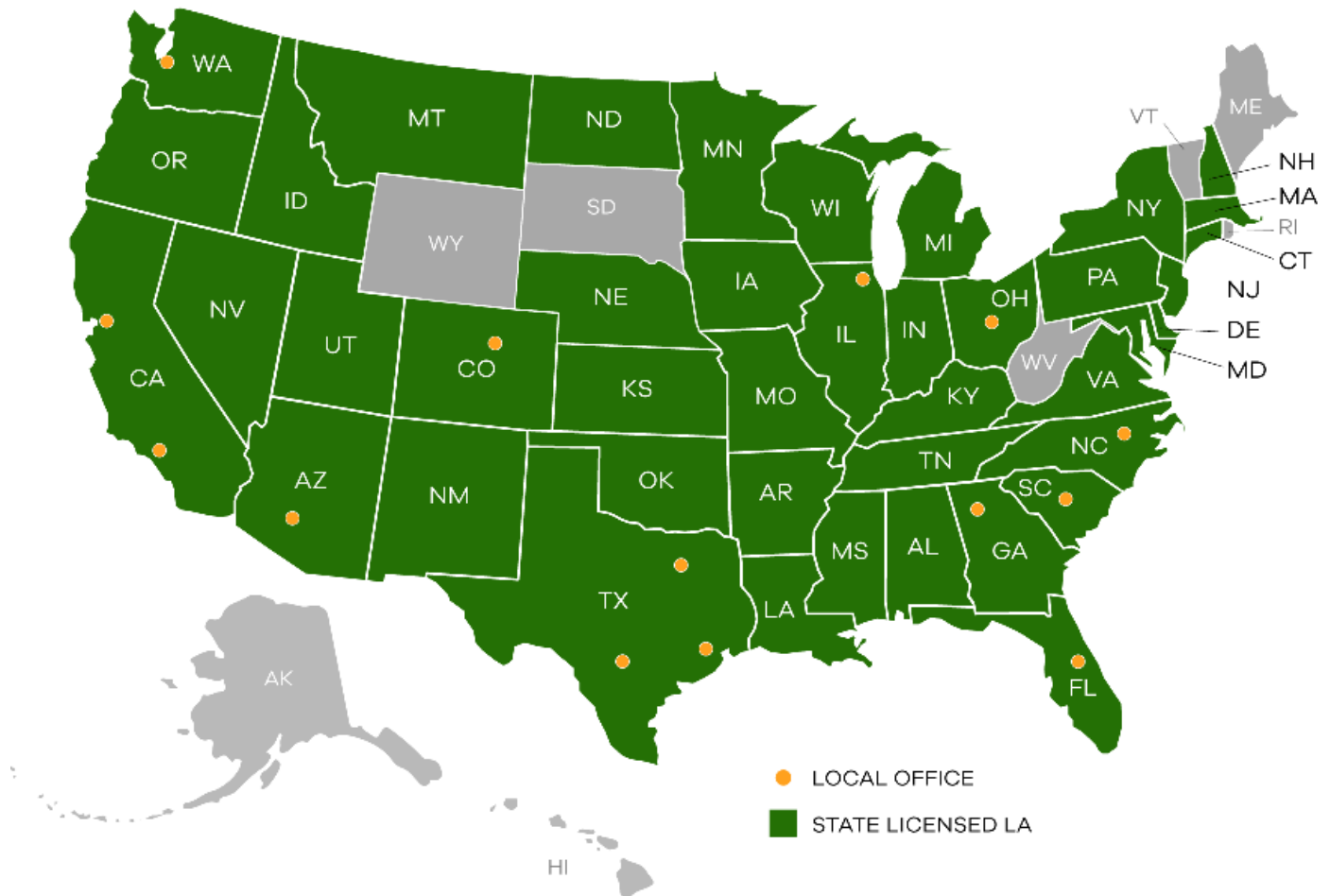
Our philosophy is rooted in sustainability, functionality, and aesthetic harmony. We strive to create spaces that reflect each client's unique personality and needs while respecting and enhancing the natural environment.

OUR VALUES

We prioritize sustainability, constructability, and cost-efficiency, aligning closely with our clients' visions.

Our team focuses on delivering exceptional quality through rigorous quality assurance processes, ensuring each project is both innovative and practical.

NATIONAL PRESENCE. LOCAL EXPERTISE.



When a company starts to grow.

Our design philosophy goes beyond trends, aiming to create lasting, impactful spaces.

With offices and remote team members positioned nationwide, we combine broad national coverage with localized insights to deliver designs that are both functional and cost-effective.

Whether designing large urban spaces or intimate community areas, we're here to support your vision from concept to completion.

Our Landscape Architects are currently registered in over 40 states! This helps streamline projects nationwide.

OUR SERVICES

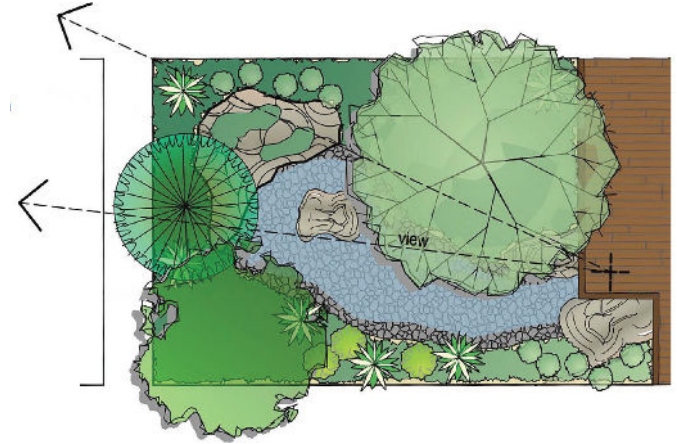
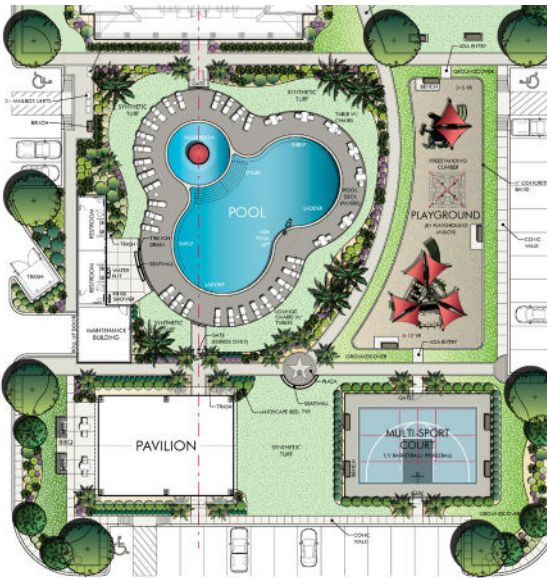
Landscape Architecture

PLANTING PLANS

- Site evaluation & analysis
- Conceptual and schematic design
- Design development
- Code compliant design
- Sustainable practices
- Value engineering
- Cost estimating
- Bidding and contract documents
- Construction drawings & specifications
- Presentation graphics

TREE DISPOSITION PLANS

- Tree surveys
- Tree preservation & mitigation plans



COMMUNITY AMENITIES

- Code compliant pool design
- Pool deck / Patios
- Outdoor Kitchens Areas
- Gathering Spaces
- Seating Areas
- Site Furnishings
- Sails and Shade Structures
- Pavilions
- Walking Trails
- Fitness Stations
- Yoga Lawns
- Playgrounds
- Yard Games
- Dog Parks
- Athletic fields
- Sport courts
- Sculptural art pieces

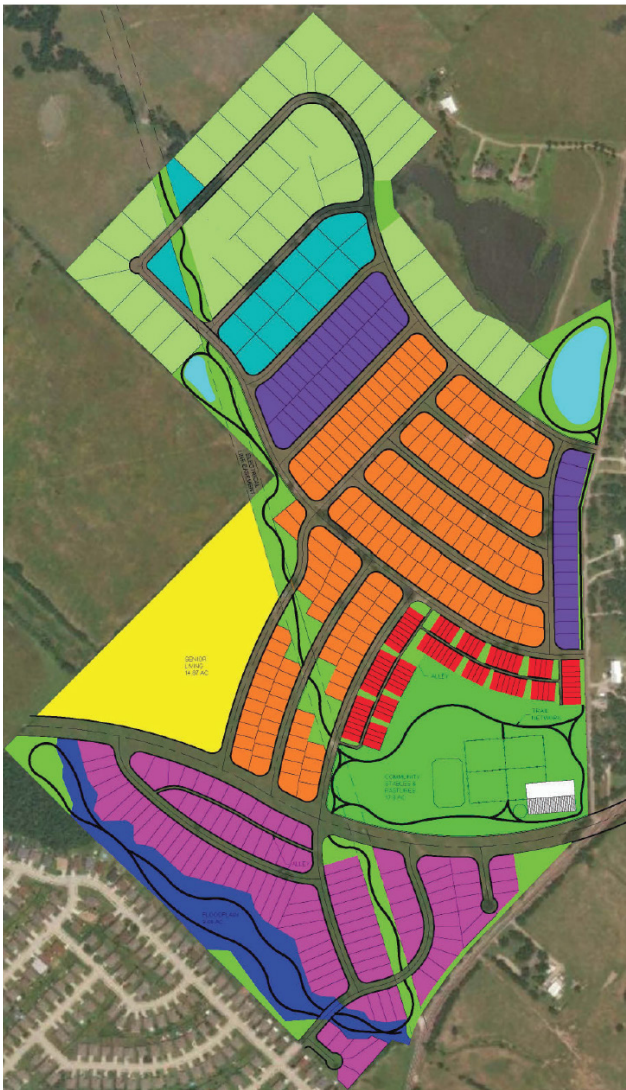
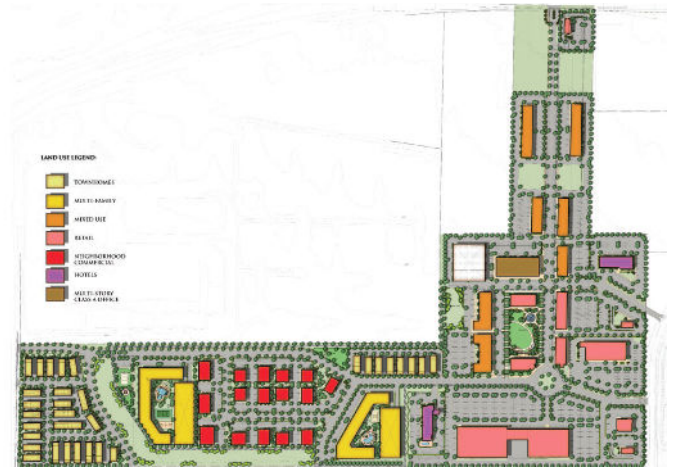
HARDSCAPE ELEMENTS

- Entry monument signs
- Perimeter fencing and walls
- Seat walls and benches
- Gazebos and pavilions
- Pergolas and arbors
- Outdoor patios and decks
- Raised planters
- Outdoor kitchens
- Outdoor fire pits
- Water features
- Trails, walkways, and paths
- Retaining walls

OUR SERVICES

Land Planning

We understand that successful strategic land planning is a collaborative effort. Whether working independently or as a project team member, we have a proven track record of successfully handling “challenging” applications and sensitive sites. Our approach often involves suggesting alternative plan concepts to help our clients make informed decisions for a successful project with maximum return.



ALL SUCCESSFUL PROJECTS START WITH A GOOD PLAN

- Research local codes that may affect site layout
- Conduct a remote preliminary meeting with the client to discuss the project
- Prepare an Illustrated rendering of the Conceptual Site Plan (By CAD or by hand) for client review
- Review and discuss the Conceptual Site Plan with the client (remotely via a screen share)
- Make updates to the Conceptual Site Plan per the client's comments
- Receive the client's final approval
- Prepare an Illustrated rendering of the Colored Conceptual Site Plan (with a detailed legend, land use and program summary data, and any necessary calculations)

OUR SERVICES

Irrigation Design

DESIGN SERVICES

- **Site Analysis:** To create a customized plan, we assess your landscape's unique needs, soil type, and water sources.
- **System Design:** Utilizing the latest technology, we design efficient systems that conserve water and reduce waste.
- **Component Selection:** We choose high-quality components to ensure durability and effectiveness.
- **Installation Planning:** We provide a clear and detailed installation plan to guide the process and ensure seamless implementation.



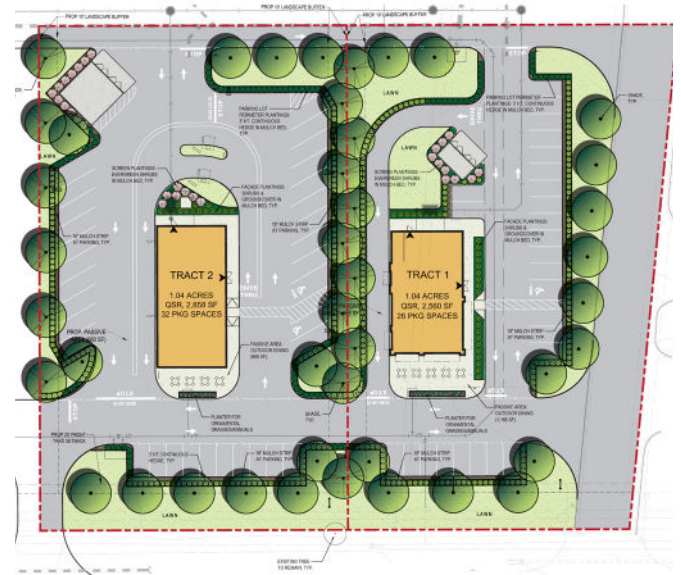
LANDSCAPE IRRIGATION CONSULTING SERVICES

While each site is unique, some of our more intricate landscape irrigation designs include our collaboration with other professional architectural and engineering consultants and may include:

- Two-wire and conventional wire systems
- Pump stations and controls
- Alternative water sources (such as ponds and water cisterns)
- Drip irrigation design for above-ground planters
- Green roofs
- Projects applying for LEED accreditation
- Water capture/re-use systems, including runoff, HVAC condensate, and greywater
- MWELC calculations (California projects)

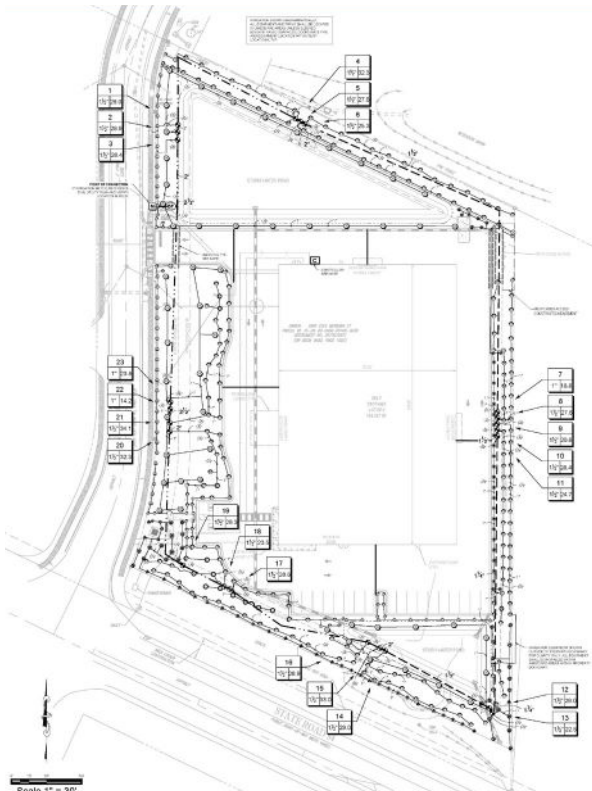
PROGRAM MANAGEMENT

Enhancing project efficiency with Landscape Architects. A Landscape Architect on your program management team can be a game-changer in architecture, civil engineering, and real estate development. Offering more than just aesthetic enhancements, our landscape architects will develop a plan to increase efficiency and enhance the overall cost-effectiveness of every project within your program.



SETTING THE BASELINE

- Creating prototypical landscape planting and irrigation plans to be used as a design template for all your project locations to ensure consistency and that your objectives are being met across every project.
- Developing written landscape planting and irrigation design guidelines to coincide with the prototypical plans. The guidelines can consist of plant selections (geographically-based), material selections, and installation procedures.



PERMIT AND CONSTRUCTION PLANS

- Our landscape architects and irrigation designers create planting and irrigation plans that ensure your goals are being met.

INDUSTRIES WE SERVE

COMMERCIAL

- Retail
- Restaurant
- Hospitality
- Financial
- Service Facilities



RESIDENTIAL

- Senior Living
- Multi-Family
- Single Family Communities
- RV & Camping Communities

EDUCATIONAL

PUBLIC & CIVIC

SPORTS & RECREATION

INDUSTRIAL

CORPORATE HQ

RESORTS



SERVICES

We keep abreast of the latest industry trends and technology developments in landscape architecture across the country, and in all climates and regions. We also understand the industry-specific demands and challenges faced by our clients. This knowledge allows us to provide specialized site design and consulting services for every situation.

OUR TEAM

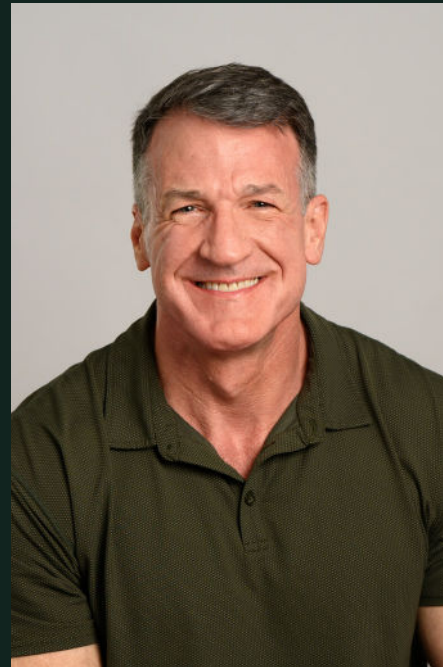
RODNEY MCNABB

PRESIDENT

Rodney McNabb, a U.S. Marine Corps veteran, founded Evergreen Design Group (EDG) in 2005 with a mission to create a nationally recognized landscape architecture firm that blends sustainable, functional, and visually striking designs. Drawing on over 13 years of experience in landscape contracting, Rodney leads EDG with a unique perspective, approaching landscape architecture with a contractor's eye to ensure designs are both innovative and cost-effective for long-term success.

Under Rodney's leadership, EDG has become a trusted, single-source partner for clients nationwide. His hands-on experience in roles spanning Sales, Estimating, and Regional Management across multiple states equipped him with both local expertise and a broad national outlook. This client-centered approach is integral to EDG's commitment to consistently meeting diverse client needs, from concept through to seamless project delivery.

Rodney's vision for EDG is grounded in his passion for design innovation and sustainability, aiming to protect clients' visions while identifying efficiencies and reducing future construction and maintenance costs. His dedication to quality, consistency, and partnership has made Evergreen Design Group a sought-after firm, recognized for its commitment to high standards, dependable results, and positive, lasting impact on every project.



800.680.6630 x1



rodney@evergreendesigngroup.com



www.linkedin.com/in/edgrodney/

OUR OFFICES

When you choose Evergreen Design Group to join your team, we do just that. We bring the mindset to work seamlessly with your team and other consultants. With us on your team you get far more than just a Landscape Architect . . . you receive an unsurpassed experience and a partnership that lasts well beyond the planting of the final tree.



Contact us! We are in your area.

Arizona

2701 East Camelback Rd.
Ste 150
Phoenix, AZ 85016

California

IRVINE

17875 Von Karman
Ste 150
Irvine, CA 92614

SAN RAMON

Bishop Ranch 3
Ste 200
San Ramon, CA 94583

Colorado

16 Market Square
Ste 400
Denver, CO 80202

Florida

4700 Millenia Blvd
Ste 500
Orlando, FL 32839

Illinois

50 South Main St
Ste 200
Naperville, IL 60540

Georgia

303 Perimeter Circle North
Ste 300
Atlanta, GA 30346

North Carolina

CORPORATE OFFICE

1340 Environ Way
Chapel Hill, NC 27517

Ohio

2323 W. 5th Ave
Ste 120
Columbus, OH 43204

South Carolina

140 Stoneridge
Ste 430
Columbia, SC 29210

Texas

DALLAS

2550 Pacific Ave
Ste 700
Dallas, TX 75226

HOUSTON

2 Boulevard Place
Ste 600
Houston, TX 77056

SAN ANTONIO

401 East Sonterra Blvd
Ste 375
San Antonio, TX 78258

Washington

1201 Pacific Ave
Ste 600
Tacoma, WA 98402

evergreen
DESIGN GROUP

Contact us

Address

Evergreen Design Group
1340 Environ Way
Chapel Hill, NC 27517

Phone Number

(800) 680.6630

Email Address

contact@evergreendesigngroup.com

